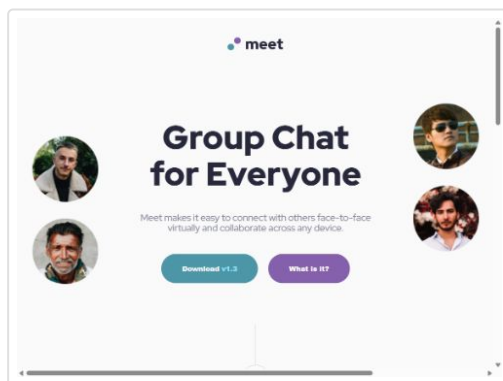


Performance

Values are estimated and may vary. The [performance score is calculated](#) directly from these metrics. [See calculator.](#)

▲ 0–49 ■ 50–89 ● 90–100



METRICS

[Expand view](#)

● First Contentful Paint
0.6 s

● Largest Contentful Paint
0.6 s

Total Blocking Time

0 ms

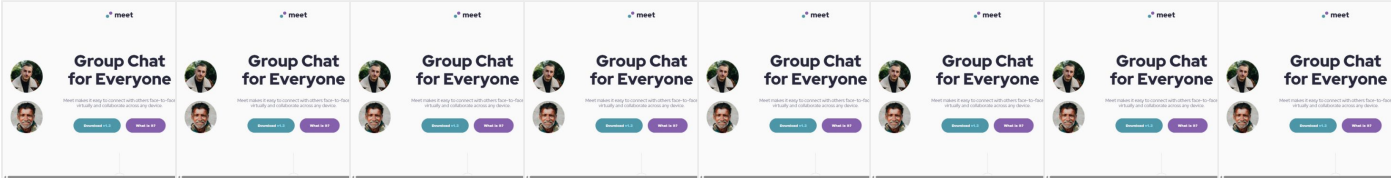
Cumulative Layout Shift


0.003

Speed Index

0.6 s

View Treemap



 Later this year, insights will replace performance audits. [Learn more and provide feedback here.](#)

Try insights

Show audits relevant to: **All** [FCP](#) [LCP](#) [TBT](#) [CLS](#)

DIAGNOSTICS

- ▲

Page prevented back/forward cache restoration — 1 failure reason

▼
- Serve images in next-gen formats — Est savings of 295 KiB

▼
- Enable text compression — Est savings of 8 KiB

▼
- Properly size images — Est savings of 34 KiB

▼
- Avoid large layout shifts — 1 layout shift found

▼
- Avoid chaining critical requests — 2 chains found

▼
- Minimize third-party usage — Third-party code blocked the main thread for 0 ms

▼
- Largest Contentful Paint element — 640 ms

▼

More information about the performance of your application. These numbers don't [directly affect](#) the Performance score.

PASSED AUDITS (30) Show



Accessibility

These checks highlight opportunities to [improve the accessibility of your web app](#). Automatic detection can only detect a subset of issues and does not guarantee the accessibility of your web app, so [manual testing](#) is also encouraged.

CONTRAST

- ▲

Background and foreground colors do not have a sufficient contrast ratio.

▼

These are opportunities to improve the legibility of your content.

BEST PRACTICES

- ▲

Touch targets do not have sufficient size or spacing.

▼

These items highlight common accessibility best practices.

ADDITIONAL ITEMS TO MANUALLY CHECK (10)

Show

These items address areas which an automated testing tool cannot cover. Learn more in our guide on [conducting an accessibility review](#).

PASSED AUDITS (15)

Show

NOT APPLICABLE (40)

Show



Best Practices

TRUST AND SAFETY

- Ensure CSP is effective against XSS attacks

▼
- Use a strong HSTS policy

▼

<div><div></div><div>Ensure proper origin isolation with COOP</div></div>	▼
<div><div></div><div>Mitigate clickjacking with XFO or CSP</div></div>	▼
PASSED AUDITS (14)	
Show	
NOT APPLICABLE (3)	
Show	



SEO

These checks ensure that your page is following basic search engine optimization advice. There are many additional factors Lighthouse does not score here that may affect your search ranking, including performance on [Core Web Vitals](#). [Learn more about Google Search Essentials](#).

ADDITIONAL ITEMS TO MANUALLY CHECK (1)	Show
--	------

Run these additional validators on your site to check additional SEO best practices.

PASSED AUDITS (10)	Show
--------------------	------

Captured at Jun 23, 2025, 11:00 PM GMT+2

Emulated Desktop with Lighthouse 12.6.0

Single page session

Initial page load

Custom throttling

Using Chromium 137.0.0.0 with devtools